



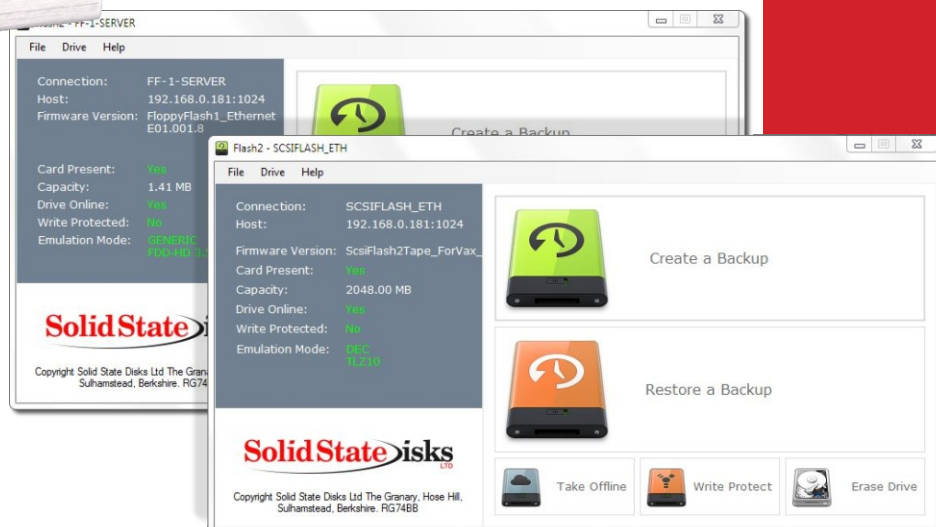
Graphical user interface for the control / configuration and backup / restore of SCSIFlash™ and FLOPPYFlash™ emulators for the replacement of legacy hard, floppy and tape drives.



# FLASH2GUI DATASHEET



Fully integrates  
with **SCSIFlash™**  
and **FLOPPYFlash™**  
Emulation Drives



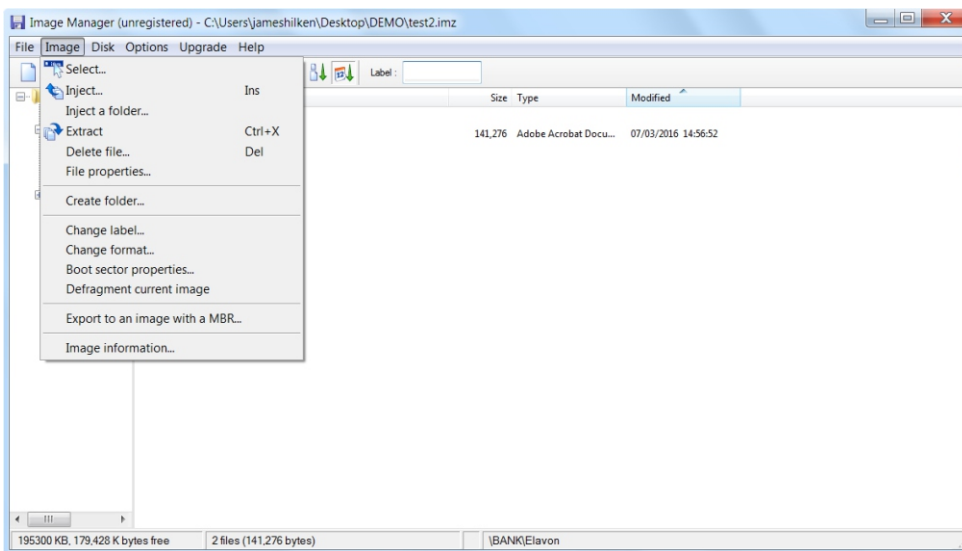
# FLASH2GUI DESCRIPTION



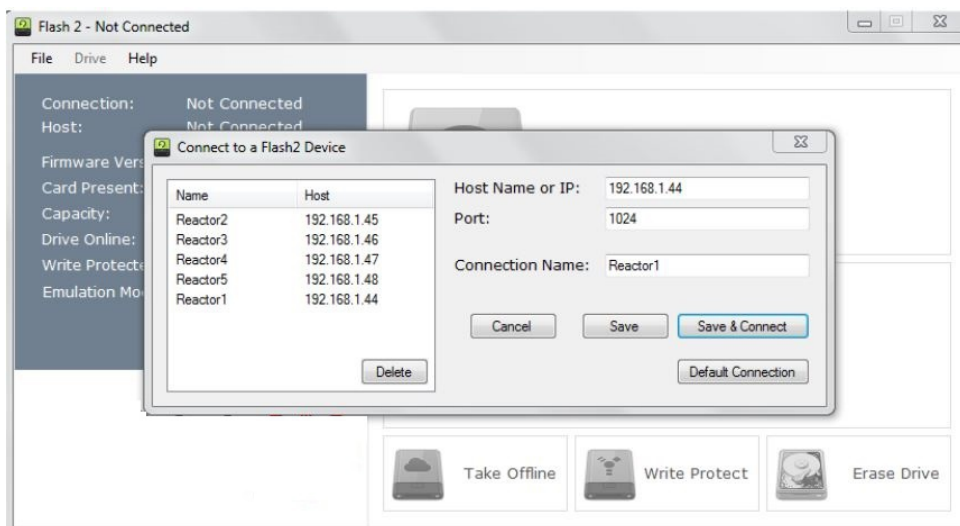
**FLASH2GUI** is a graphical user interface that fully integrates with Solid State Disks' **SCSIFlash™** and **FLOPPYFlash™** emulation drives that use standard, industrial **CompactFlash** card technology to provide a solid state, drop-in replacement for obsolete electro-mechanical hard, floppy and tape drives. **SCSIFlash™** and **FLOPPYFlash™** provide OEMs and service providers with a quick, easy and cost-efficient solution for supporting their legacy systems and equipment.

**FLASH2GUI** is used for the control and configuration of the **SCSIFlash™** and **FLOPPYFlash™** emulation drives as well as network backup and restore operations. **FLASH2GUI** is available for both Microsoft Windows and as a command line interface for Linux.

**FLASH2GUI** enables the configuration of the **SCSIFlash™** and **FLOPPYFlash™** firmware to facilitate a perfect host match, eliminating the need for any host hardware or software changes. It also features multiple login levels to prevent unauthorised use and can be used to set the disk capacity from 1Mb to 64GB, set the drive emulation, the drive's IP address and name remotely as well as write protect and erase a drive's contents.



**FLASH2GUI's** Image Editor facilitates data backup and restore based on a bit-for-bit disk image which can be unpacked, edited, re-packed and restored direct the **SCSIFlash™** and **FLOPPYFlash™** drive. It also enables the creation of a new formatted drive and the addition of new software install files to run from the drive.



Demonstrations of how to use **FLASHGUI** on **SCSIFlash™** and **FLOPPYFlash™** for configuration and control, back-up and restore and the selection of different drive emulations, can be seen of Solid State Disk's YouTube channel: [www.youtube.com/channel/UCCecBg7qR9oa6bqYflEalCg](http://www.youtube.com/channel/UCCecBg7qR9oa6bqYflEalCg).



## Summary of FLASH2GUI capability

- Multiple login levels to prevent unauthorised use.
- Back-up and restore by disk image.
- Set disk capacity from 1Mb to 64GB
- Write protect and erase drive contents.
- Set drive emulation.
- Set drives IP address and name remotely.

## Summary of Image Editor capability

- View drive image contents.
- Extract files, folders or entire disk contents to PC (including exported recipes, message logs, recipe files etc)
- Add and remove files, folders from disk including recipes.
- Add new software install files to run from HD.
- Create a new formatted drive.

## FLOPPYFlash™

The **FLOPPYFlash™** emulation drive is a drop-in replacement for obsolete 3.5 inch, 5.25 inch or 8 inch floppy disk drives on legacy systems and equipment that uses removable, solid state **CompactFlash** to replace the floppy disk media. With data cable connection made to a standard, 34 pin floppy edge connector, **FLOPPYFlash™** is seen by the host as if it the original floppy drive.

*Data transfer rates are between 125kb/s and 500kb/s depending on the coding method selected.*

## SCSIFlash™

The **SCSIFlash™** emulation drive is a drop-in replacement for obsolete 3.5 inch and 5.25 inch SCSI-based hard disk, magneto-optical and tape drives on legacy systems and equipment that uses removable, solid state **CompactFlash** to replace the respective media. With data cable connection made to a standard, 50 pin SCSI-1 or SCSI-2 connector, **SCSIFlash™** is seen by the host as if it the original drive.

*Data transfer rates are up to 10Mbytes/s depending on the drive technology being replaced.*

## FLOPPYFlash™ and SCSIFlash™

- Ethernet network enabled.
- Host hardware and software compatible.
- Greatly increased reliability (MTBF) and media life.
- Fast and efficient field replacement with field-upgradable firmware via integral USB port.
- Lower power consumption, noise and heat.
- Reduction in unplanned downtime with fast recovery from system crashes or CPU failure.

The **SCSIFlash™** and **FLOPPYFlash™** are recognised Trademark of Solid State Disks Ltd.

**Solid State** disks  
LTD

Solid State Disks Ltd  
The Granary  
Hose Hill  
Sulhamstead  
Berks  
RG7 4BB  
United Kingdom  
Tel: +44 (0) 118 9323 499  
Fax: +44 (0) 118 9323 510  
Email: sales@solidstatedisks.co.uk  
web: www.solidstatedisks.co.uk